

Season 2022-2023

During our 42nd season we continued the continuous renewal and further development of our operations. The popularity of our skating school remained strong and most of the skating school participants wanted to continue after the trial sessions. At the beginning of the spring season, we started the skating school's playing group, which participated in PeliBailut and the season's closure tournament. Our activity, which is completely based on volunteers, and its quality received recognition in the form of the Olympic Committee and the OP group's #KiitosSeuratoimija scholarship.



Skating schools



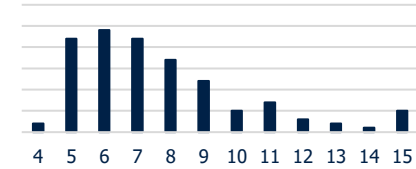
91%
Continuing after
the trial sessions

4,13
Satisfaction
(scale: 1-5)

7,8
Average age
(years)

~15
Number of
mother tongues

Age distribution



Teams



4
Number of
teams

4,08
Satisfaction
(scale: 1-5)

Volunteer staff



4,00
Satisfaction
(scale: 1-5)

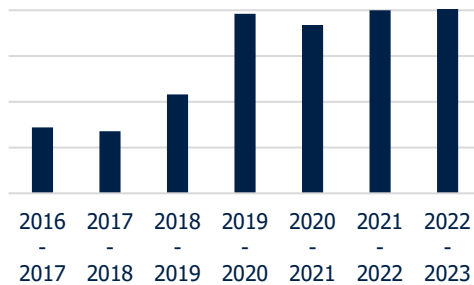
Costs

496 EUR
Seasonal costs in average
per player

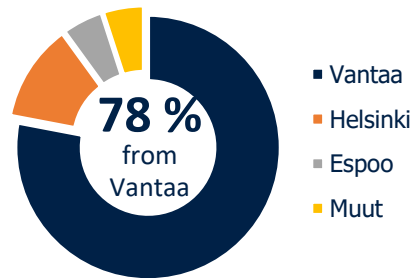
Members



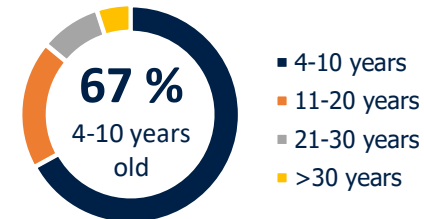
Membership per season



Membership per hometown



Players' age distribution



52 %
Share of facility rents out of
all expenses (incl. ice costs)

56 %
Share of monthly fees
out of all incomes



walapaisringette



walapaisry