



Season 2021 - 2022

During the club's 41st operating season we celebrated our 40-year history primarily through basic doing. The number of skating school participants broke our all-time record. At the beginning of the season, we launched the Circulation Equipment Loan Program which provides junior players with free-of-charge borrowing of the equipment at the beginning of their player career. We were more active in content production than ever, and published a digital anniversary gallery about the club's rich history. We continued to develop our operations and after the corona pandemic, we were able to enjoy a complete period of growth at the ice rink.

Increase in the number of players *)

23 %

Increase in the number of skating school participants

79 %

Amount of the skating school licences

All time high

Amount of the teams

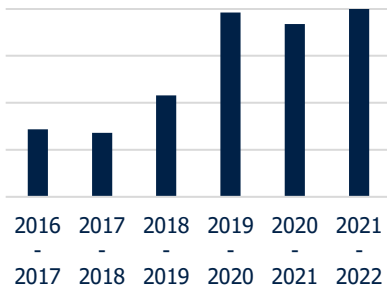
4 Change -2

Satisfaction with the club (scale 1 - 5)

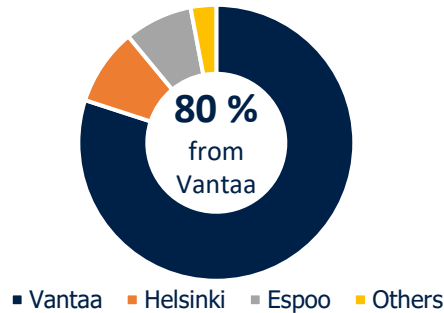
4,5 Change -0,1

*) incl. those having continued in the skating schools

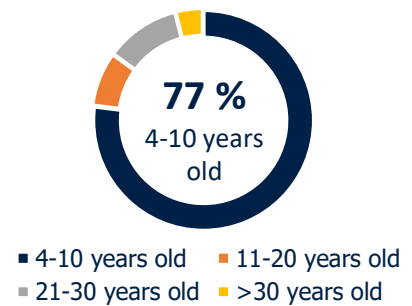
Membership per season



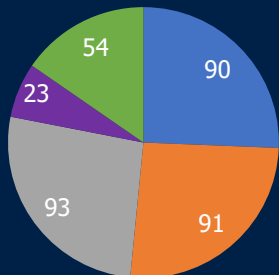
Membership per home town



Players' age distribution



Club's training events (pcs)



Continuing in the skating schools after the trial period

82 %
Change +2 %

Satisfaction with own team (scale 1 - 5)

- Children's skating school **4,6**
- Junior teams **4,6 (+0,2)**

Diversity in the skating schools

Number of mother tongues

~12

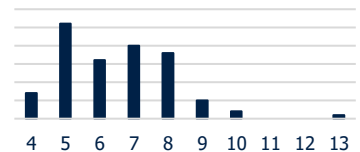
Amount of boys

~44 %

Average age

6,8 years

Age distribution



Seasonal costs in average per player

468 EUR

Share of facility rents out of all expenses (incl. ice costs)

46 %

Share of monthly fees out of all incomes

62 %

Our partners

